

United States Patent [19]

Sgroi

[11] Patent Number: Des. 296,338

[45] Date of Patent: ** Jun. 21, 1988

[54] REMOTE KEYBOARD CONTROLLER

[75] Inventor: John J. Sgroi, Schenectady, N.Y.

[73] Assignee: Lync Systems Inc., Albany, N.Y.

[**] Term: 14 Years

[21] Appl. No.: 736,082

[22] Filed: May 20, 1985

[52] U.S. Cl. D17/1; D17/9

[58] Field of Search D17/1, 2, 5, 9, 99,
D17/14, 7; 84/1.01, DIG. 7; 446/408, 491

[56] References Cited

U.S. PATENT DOCUMENTS

D. 254,496	3/1980	Hill	D17/1
D. 278,066	3/1985	Garogian	D17/1
3,335,629	8/1967	Brodin	D17/1 X
4,352,310	10/1982	Orlandoni	84/1.01
4,570,521	2/1986	Fox	84/1.01

OTHER PUBLICATIONS

Hong Kong Toys '84, p. 81, bottom of page.
Contemporary Keyboard Magazine, Oct. 1979, cover
and pp. 36-39 and 46.

Contemporary Keyboard Magazine, Jul. 1980, pp.
44-46, 48, 50-53.

Keyboard Magazine, Feb. 1984, pp. 60-62, 64, 66-69.

Roland Users Group Magazine, vol. 3, No. 1, 1985, p.
30.

Primary Examiner—Bernard Ansher

Assistant Examiner—Theodore M. Shooman

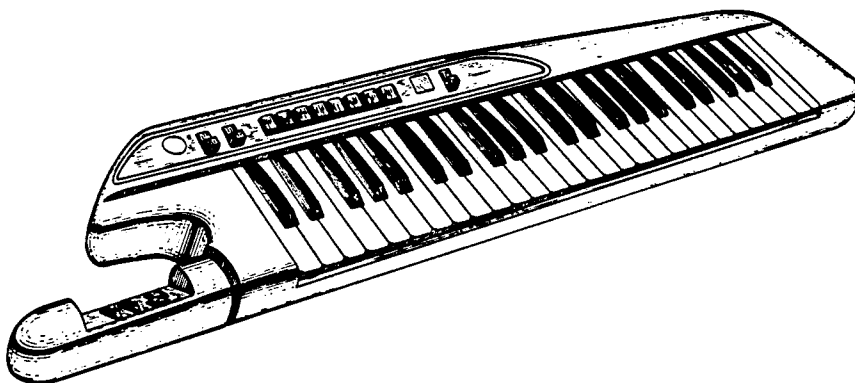
Attorney, Agent, or Firm—Heslin & Rothenberg

[57] CLAIM

The ornamental design for a remote keyboard controller, as shown and described.

DESCRIPTION

FIG. 1 is a top, front and left side perspective view of a remote keyboard controller showing my new design; FIG. 2 is a top plan view thereof; FIG. 3 is a bottom plan view thereof; FIG. 4 is a front elevational view thereof; FIG. 5 is a rear elevational view thereof; FIG. 6 is a left side elevational view thereof; FIG. 7 is a right side elevational view thereof; and, FIG. 8 is a top, front and left side perspective view thereof, shown with the left hand controller section in a rotated position.



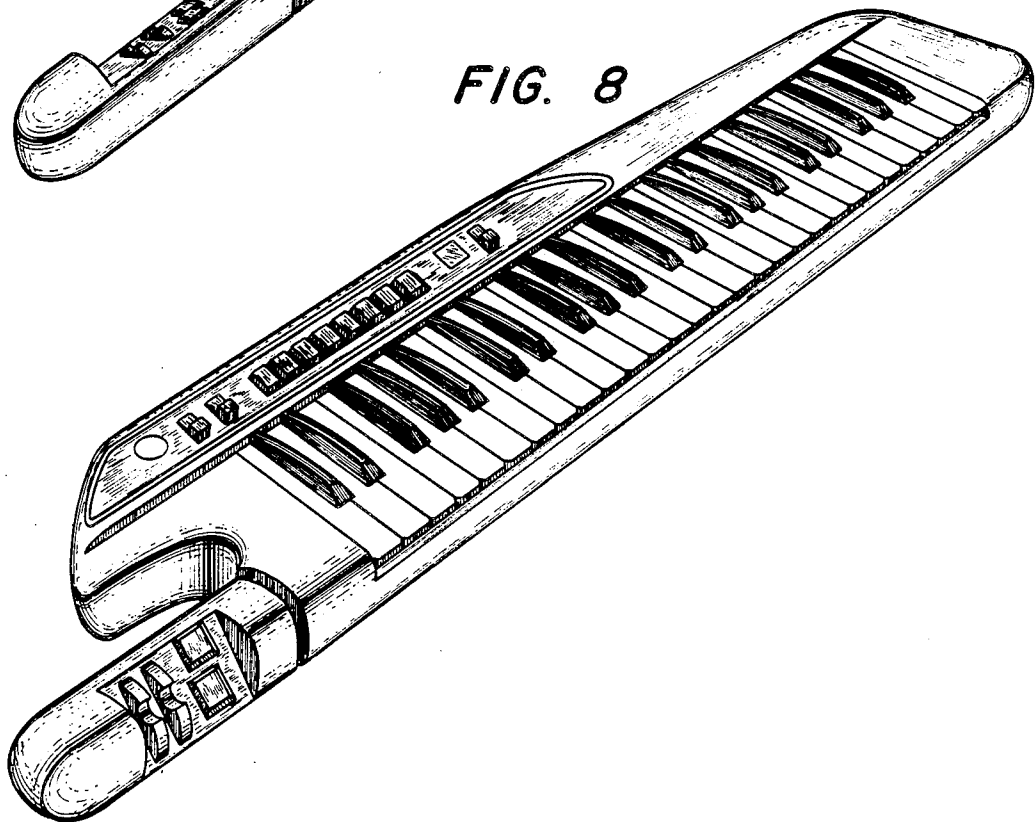
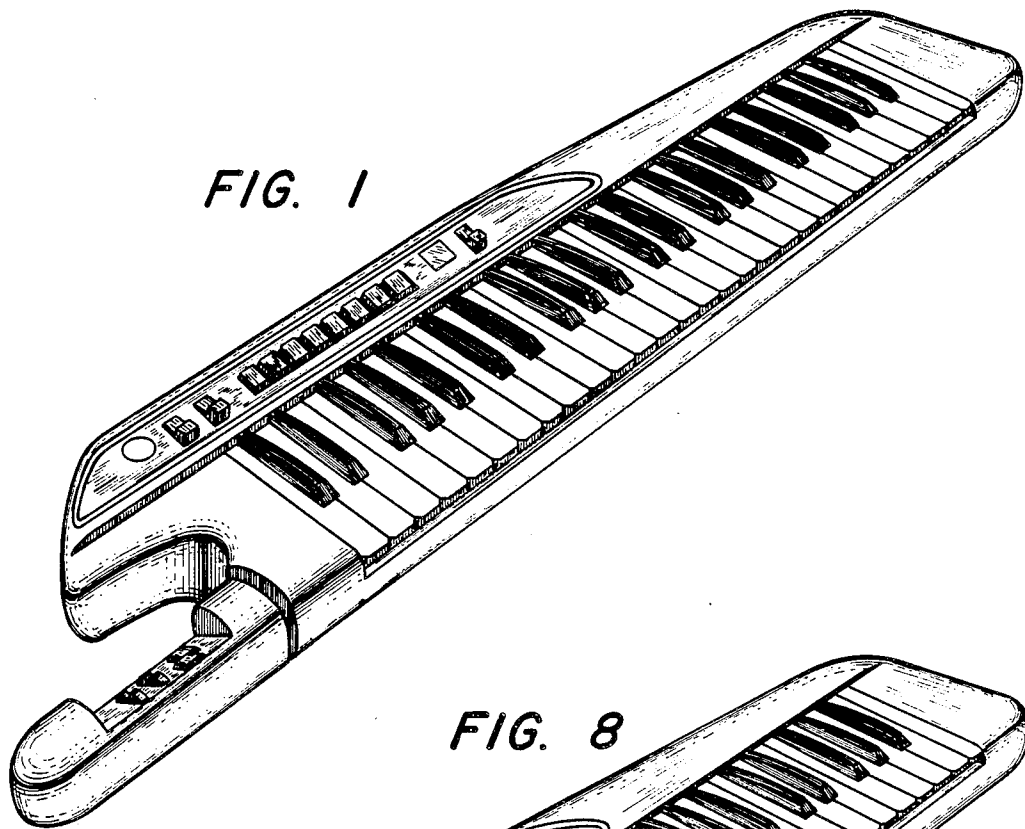


FIG. 2

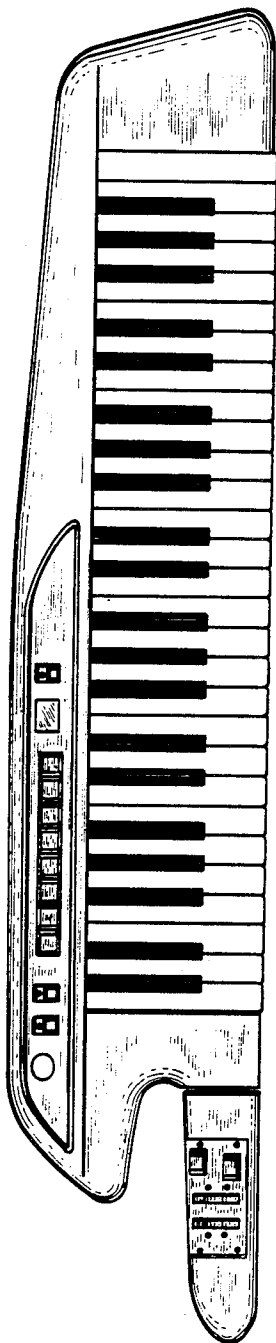


FIG. 3

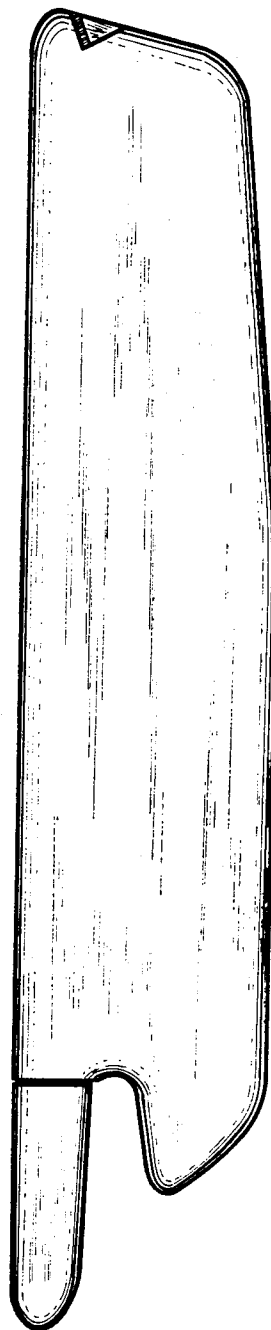


FIG. 4

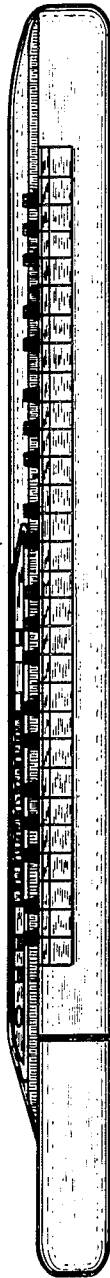


FIG. 5

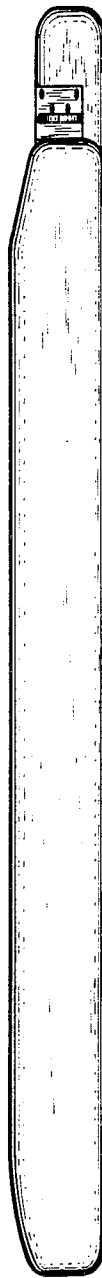


FIG. 7



FIG. 6

